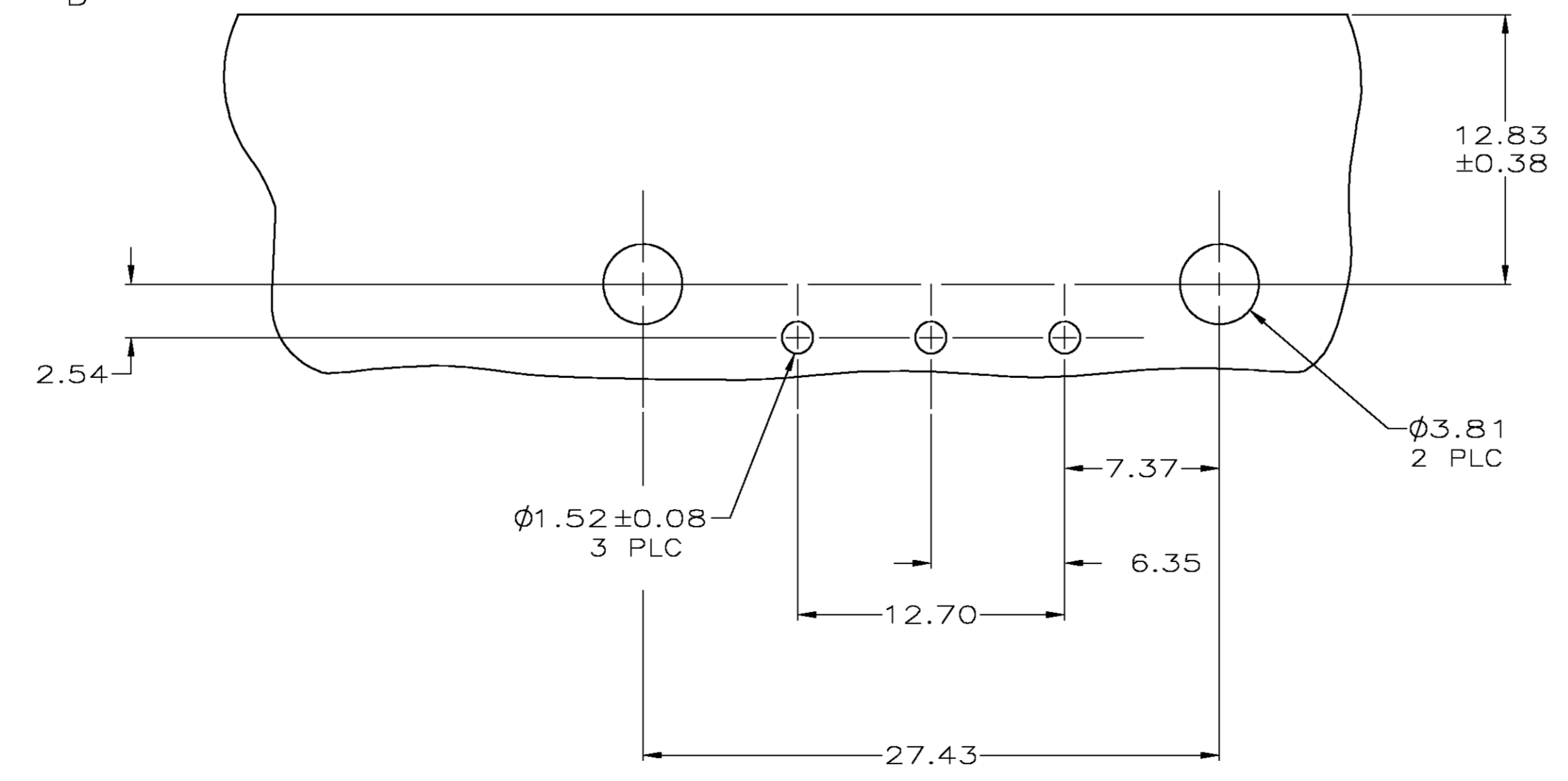
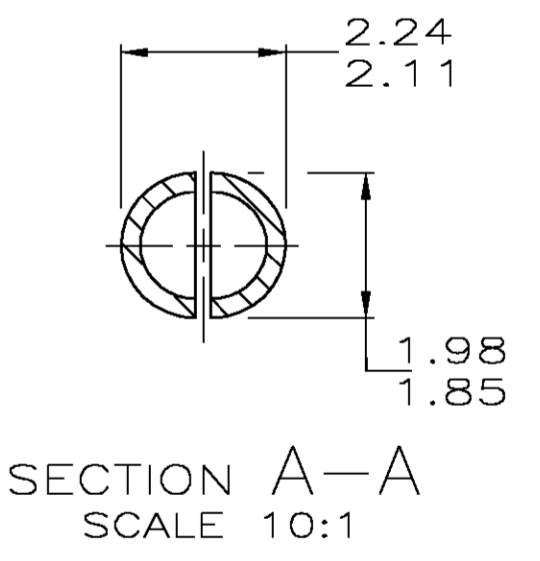
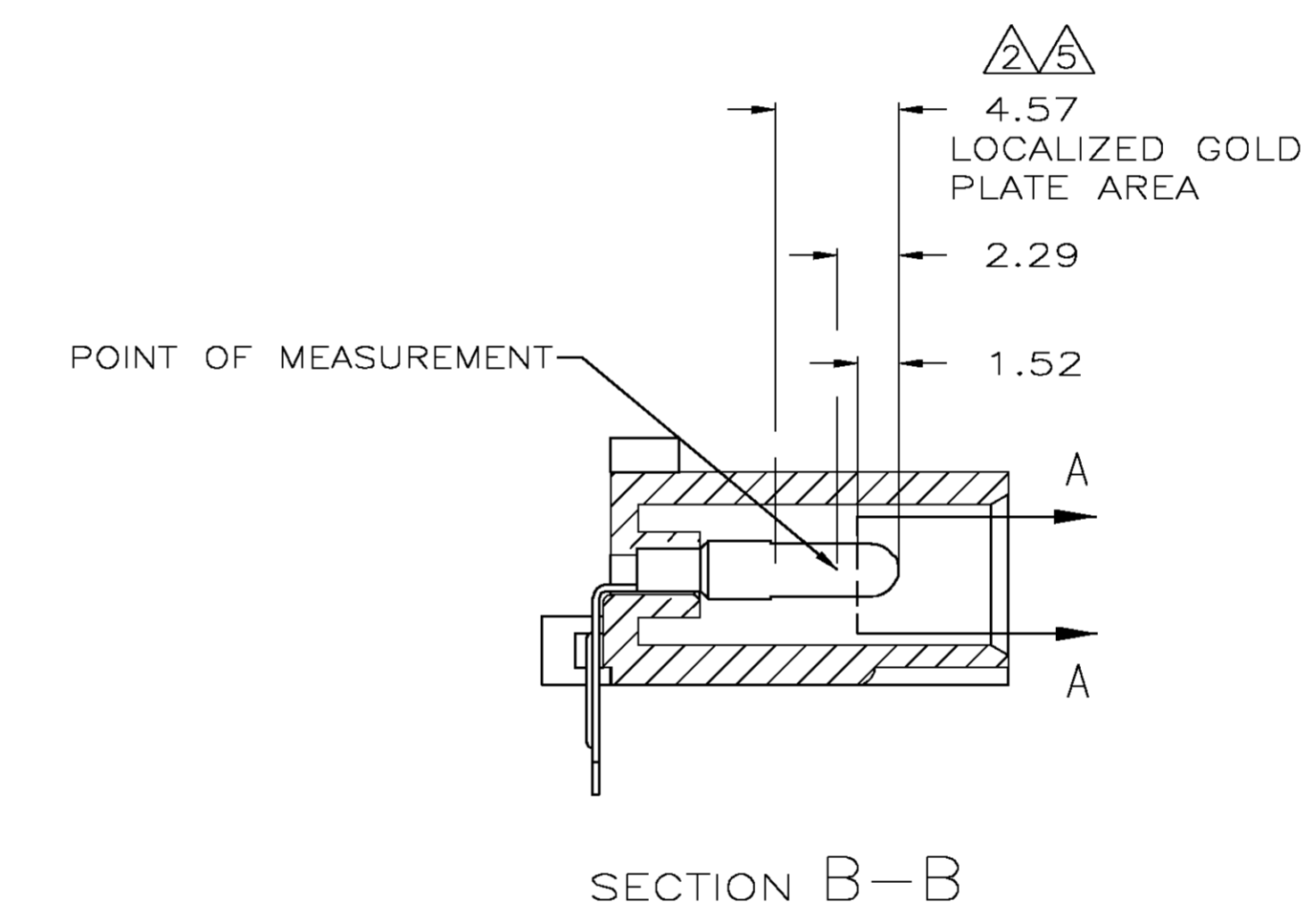
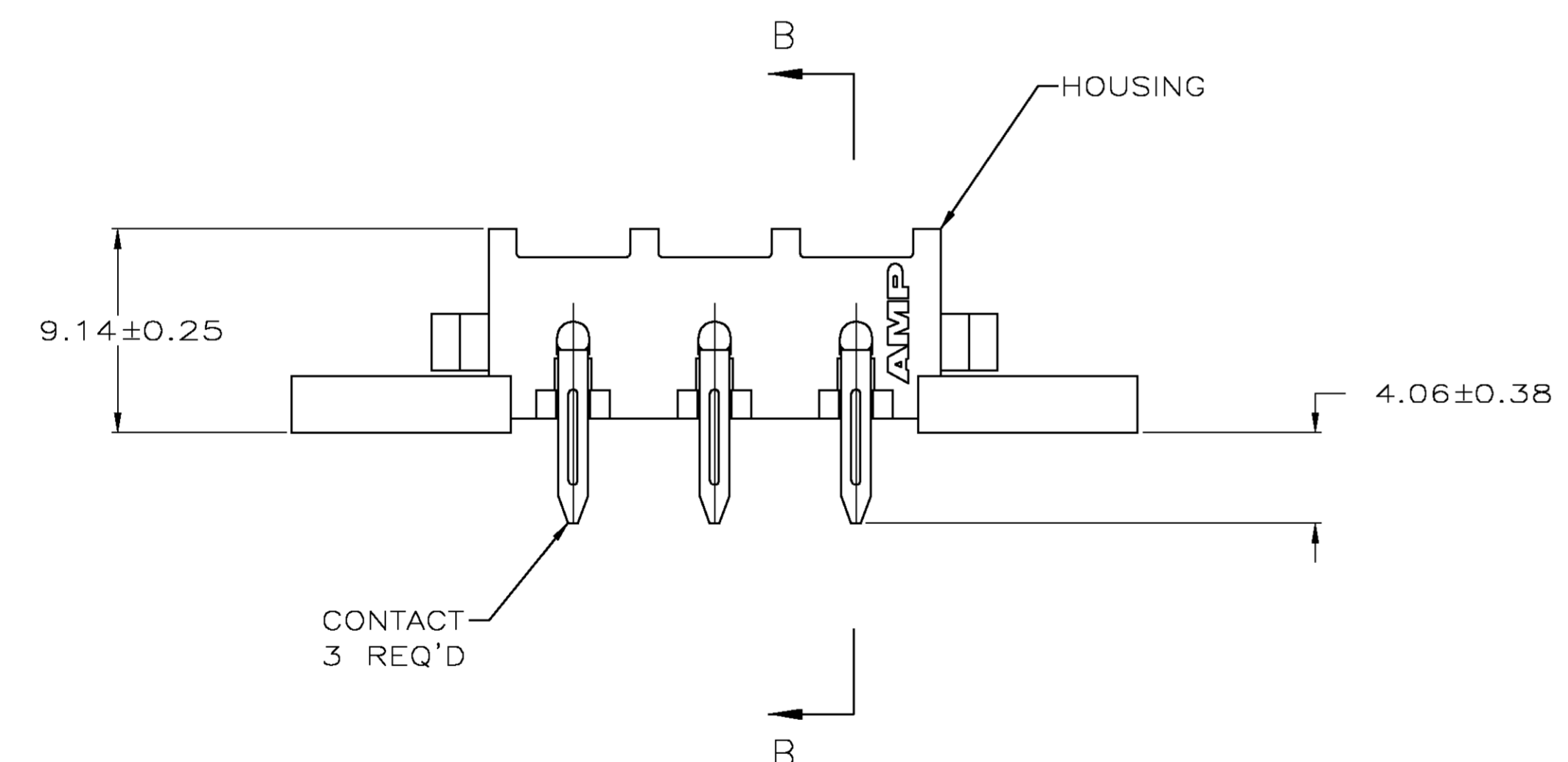
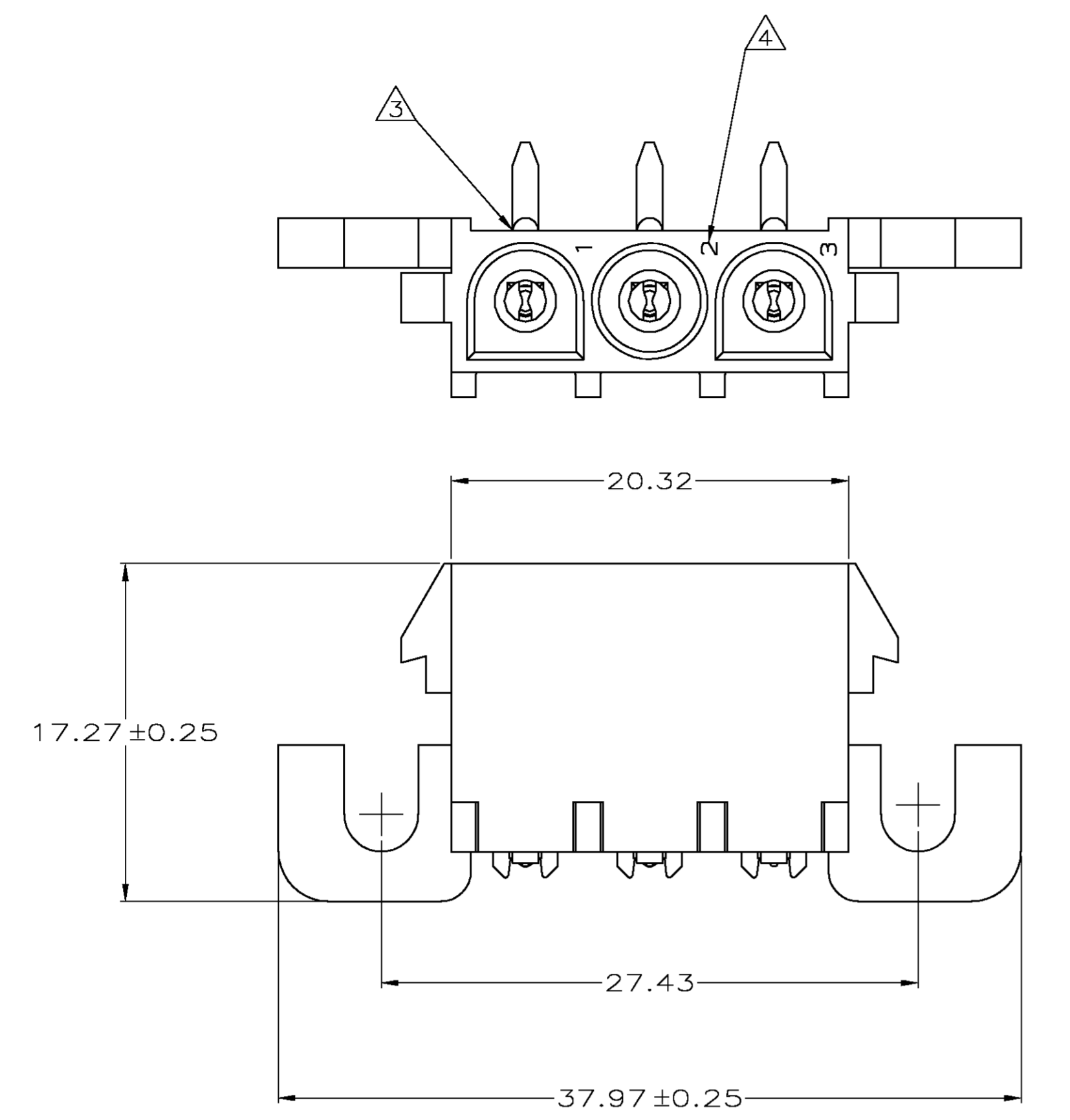


LOC	DIST	REVISIONS					
		P	LTR	DESCRIPTION	DATE	DNW	APVD
CM	00	M	REV PER EC	OG3B-1094-04	15APR05	KW	SR



- PARTS COMPLY WITH AMP SOLDERABILITY SPECIFICATION 109-11-5.
- CONTACT IS PLATED OVERALL WITH 0.00127 MIN NICKEL, THEN 0.00076 GOLD OVER CONTACT LENGTH INDICATED AND MATTE TIN-LEAD FINISH ON SOLDER TAIL END.
- OPTIONAL CONSTRUCTION MAY DELETE THIS RIB.
- CIRCUIT IDENTIFICATION CHARACTERS ARE ADJACENT TO THE INDICATED CAVITIES, BUT LOCATION AND ORIENTATION MAY DIFFER FROM PRINT.
- CONTACT IS PLATED OVERALL WITH 0.00127 MIN NICKEL, THEN 0.00076 GOLD OVER CONTACT LENGTH INDICATED AND MATTE TIN FINISH ON SOLDER TAIL END.

MM	IN	MM	IN
2.29	.090	37.97	1.495
2.24	.088	27.43	1.080
2.11	.083	20.32	.800
1.98	.078	17.27	.680
1.85	.073	12.83	.505
1.57	.062	12.70	.500
1.52	.060	9.14	.360
0.38	.015	7.37	.290
0.25	.010	6.35	.250
0.13	.005	4.57	.180
0.08	.003	4.06	.160
.00127	.000050	3.81	.150
.00076	.000030	2.54	.100
MM	IN	MM	IN

RECOMMENDED MOUNTING HOLE PATTERN FOR 1.57 THICK P.C. BOARD



PH BRZ GOLD, Δ	NYLON UL 94V-0	3-350943-0
PH BRZ GOLD, Δ	NYLON UL 94V-0	2-350943-0
PH BRZ PRE-TIN	NYLON UL 94V-0	1-350943-0
CONTACT	HOUSING	PART NUMBER

THIS DRAWING IS A CONTROLLED DOCUMENT.

DIMENSIONS: mm	TOLERANCES UNLESS OTHERWISE SPECIFIED:	APVD: S. RIDGILL	NAME: S. RIDGILL	DATE: 15APR2005	SIZE: A1	DATE CODE: 00779	DRAWING NO: C=350943	RESTRICTED TO: -
0 PLC ± -	1 PLC ± -	2 PLC ± 0.13	3 PLC ± -	4 PLC ± -	WEIGHT: -	SCALE: 4:1	SHEET: 1 of 1	REV: M

CUSTOMER DRAWING